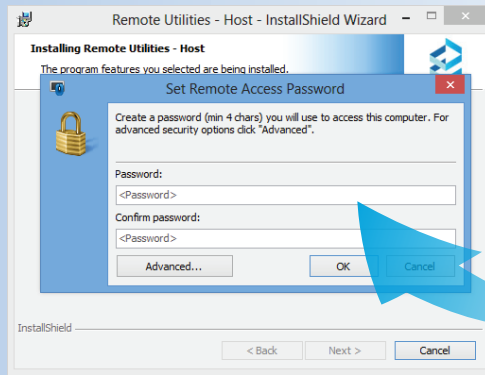


You can connect to a remote PC using its **Internet ID, IP address or the DNS name**. This guide shows you how to connect using an Internet ID, but you can follow the same steps to connect using an IP address or DNS name.

1 Installing Host

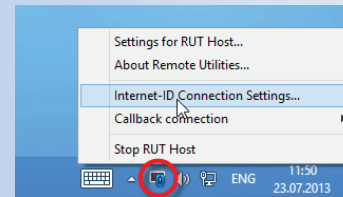


Download the Host installer and run it on the **remote PC**. When installation is complete, create an **access password**.

2 Configuring Host

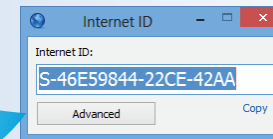


On the **remote PC** right click the Host icon in the system tray and select **Internet ID Connection Settings**.



Click the **Get New ID** button and copy the Internet ID.

Note: this step is not necessary if you connect using an IP address or DNS name.



3 Installing Viewer



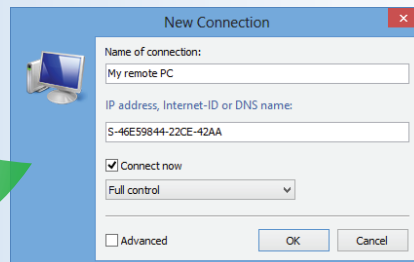
Download the Viewer installer and run it on the **local PC**. Complete the installation by following the setup steps.

4 Configuring Viewer

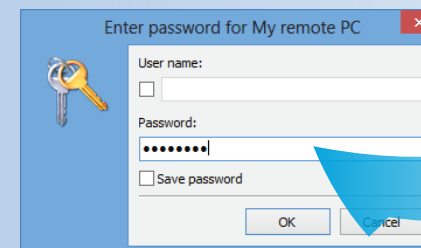
On the **local PC** run the Viewer and click the **green plus button** on the toolbar.



Enter a connection name and the **Internet ID** from the step 2 and click **OK**.



5 Connecting



Enter the Host's **access password** in the password prompt window and click **OK**.

The remote session will start in the chosen connection mode.